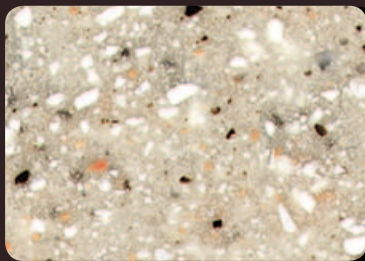


Distinctive. Durable. Timeless.

Huber's Granite Elite® is a precision formulated, ready-to-use mixture of alumina trihydrate (ATH) and pigmented polymer granules for manufacturing non-gelcoated solid surfaces and gelcoated cultured granite. It is typically used to produce kitchen and bath surfaces such as countertops, sinks, tubs and shower bases.

Popular Granite Elite® Colors



GE 024 Georgia Sand



GE 111 Ecrú



GE 120 Lace



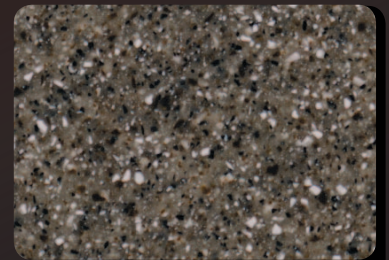
GE 121 Sand



GE 122 Terracotta



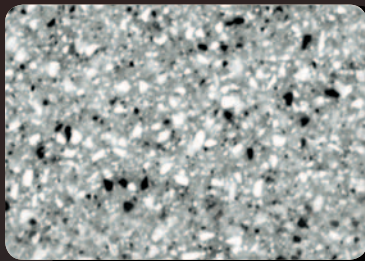
GE 123 Aurora



GE 201 Cocoa



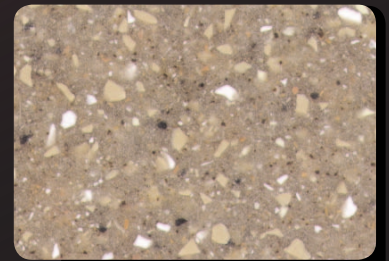
GE 220 Sea Shell



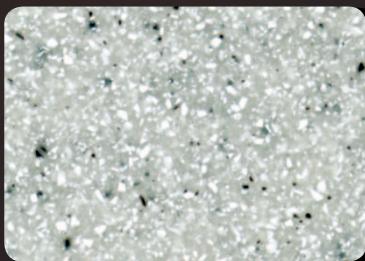
GE 240 Pewter



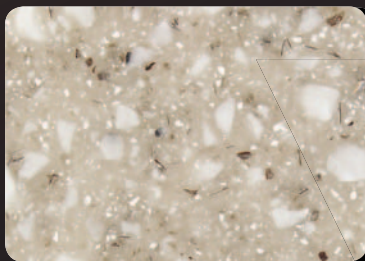
GE 241 Everest



GE 323 Mocha



GE 343 Quarry Grey



GE 609 Rocky Mountain

To View Additional
Granite Elite Colors, Visit:
hubermaterials.com/granite

Why Granite Elite® from Huber Engineered Materials?

Product Appearance

- Solid surfaces made with Huber's Granite Elite® can be easily cleaned and repaired.
- The materials used to make Granite Elite are inherently stain and corrosion resistant.
- Huber is able to match virtually any customer color requirements, so let us know your custom color needs.
- The surface's high chip density combined with our quality ingredients create brilliant color and hue.

Product Performance

- Excellent batch-to-batch color consistency.
- Low resin demand with consistent resin to filler ratios.
- Superior air release characteristics.
- Fast wet-out in the mixing process.
- Consistent gel and cure characteristics.

Huber Engineered Materials

- Huber is a trusted supplier of alumina trihydrate (ATH) and calcium carbonate to the cast polymer industry and provides outstanding customer service, sales and technical support.
- Huber has an outstanding worldwide distribution network.

Granite Elite Technical Information

Physical Properties

Granite Elite colors are normally comprised of two to seven particle sizes of pigmented or semi-translucent granules and numerous color combinations to achieve the correct base color and granule sizing for the desired appearance. Granules range in size from +8 to -140 mesh and are mixed homogeneously by Huber into a combination of ATH grades for maximum particle packing and low resin demand. The specific gravity of Huber's Granite Elite products is 2.2, as ATH is a key ingredient. This refined chemical is a multi-functional extender that is pH stable in a range of 3 to 10 and, therefore, works effectively as a stain and corrosion resistant filler for solid surface products. ATH has a refractive index of 1.57, which allows for excellent translucency when used with polyester casting resins. The high-quality ATH used in Huber's Granite Elite has wet L values ranging from 87 to 90, which provides low color, excellent chip definition and translucency.

Formulating and Casting Tips

The recommended loading level for solid surface casting is 65% Granite Elite / 35% resin. Vacuum mixing is required for solid surface, and post cure is recommended. Initiator levels of 1.0% to 1.5% based on resin weight are normally used. For cultured granite, a loading of 70% Granite Elite / 30% resin can be used. Initiator levels of 1.5% on resin weight are normal, and moderate vibration is recommended.

Click: hubermaterials.com/granite
Call: 866-JMHUBER (866-564-8237)
Email: hubermaterials@huber.com



HUBER ENGINEERED MATERIALS



Colors, represented by product samples on the front of this sheet, may vary slightly from the actual textured pigment product supplied by J.M. Huber Corporation. Colors will be periodically reviewed and updated, based on market requirements and fashion color trends.

THERE ARE NO IMPLIED WARRANTIES OF MERCHANTABILITY OR FITNESS FOR A PARTICULAR PURPOSE. Refer to Huber's Standard Conditions of Sale for the only express warranties applicable to the Huber products. Products incorporating Huber products are not warranted by Huber. In no event is Huber liable for consequential damages. Granite Elite® is used, applied for, or registered as a trademark of J.M. Huber Corporation for alumina trihydrate in various countries around the world.
©2013 J.M. Huber Corporation

FRA/GE/RevIV/Jan2013